

PROJECT	DESIGNATION
1401288	1401288
CONTRACT	
K-17916	

# INDIANA DEPARTMENT OF TRANSPORTATION



## ROAD PLANS

PROJECT NO.

1401288 P.E.

1401288 CONST.

CITY OF WEST LAFAYETTE

Happy Hollow Park Drive Relocation and Trail Construction  
 Located within Happy Hollow Park and along Happy Hollow Road in  
 Section 17, T-23-N, R-4-W, Wabash Township, Tippecanoe County, Indiana

HON. JOHN DENNIS MAYOR DATE

ED GARRISON PUBLIC WORKS DIRECTOR, E.R.C. DATE

BOARD OF PUBLIC WORKS AND SAFETY

SARA G. BOOKER PRESIDENT DATE

BRADLEY L. COHEN MEMBER DATE

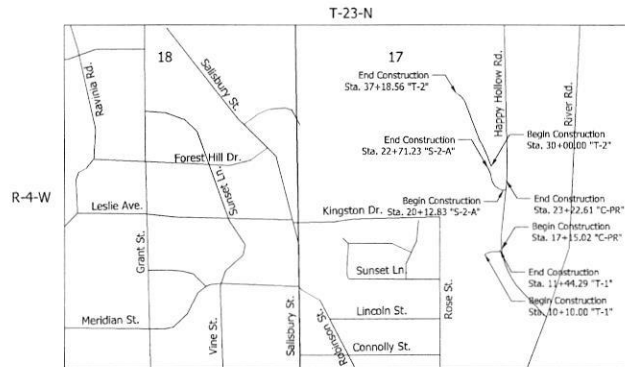
BRIDGEE E. FOLKERS MEMBER DATE

JASON D. HUBER MEMBER DATE

THOMAS J. KENT MEMBER DATE

ATTESTED BY: \_\_\_\_\_ DATE

NICHOLE A. FOSTER DEPUTY CLERK DATE



### TRAFFIC DATA - N/A Trail Only

A.A.D.T.	( )	V.P.D.	( )
A.A.D.T.	( )	V.P.D.	( )
D.H.V.	( )	V.P.H.	( )
DIRECTIONAL DISTRIBUTION		%	
TRUCKS		% A.A.D.T.	
		% D.H.V.	

### DESIGN DATA - N/A Trail Only

DESIGN SPEED	15-20 M.P.H.
PROJECT DESIGN CRITERIA	NEW CONSTRUCTION
FUNCTIONAL CLASSIFICATION	SHARED-USE PATH
RURAL/URBAN	URBAN
TERRAIN	ROLLING
ACCESS CONTROL	NONE



LATITUDE: 40°25'14" N LONGITUDE: 86°53'56" W

GROSS LENGTH: 0.33 MI.  
 NET LENGTH: 0.33 MI.  
 MAX. GRADE: 8.10 %

HUC: 05120108010040

INDIANA DEPARTMENT OF TRANSPORTATION  
 STANDARD SPECIFICATIONS DATED 2018  
 TO BE USED WITH THESE PLANS



PLANS PREPARED BY: _____	PHONE NUMBER _____
CERTIFIED BY: _____	DATE _____
APPROVED FOR LETTING: _____	DATE _____

DESIGNATION	1401288
SURVEY BOOK	1 of 38
SHEETS	
CONTRACT	4-17916
PROJECT	1401288

No: 8/23/2018 6:28 PM

P:\PWP\00771975\Shr Title.dgn

### UTILITIES

Contract  
Indiana American Water  
335 S. Crown Lane  
Lafayette, IN 47905  
574-930-7735

Engineer  
Chuck McKean  
2461 Chicago St.  
Valparaiso, IN 46383  
219-531-6947

West Lafayette  
Victor Van Allen  
506 S. River Road  
West Lafayette, IN 47906  
764-130-2795

### REVISIONS

SHEET NO.	DATE	REVISED

### GENERAL NOTES


### INDEX

SHEET NO.	TITLE
1	INDEX AND GENERAL NOTES
2	TYPICAL CROSS SECTIONS
3-4	MOT DETAIL SHEETS
5-6	PLAN & PROFILE SHEETS
7-12	MSE RETAINING WALL DETAIL
13	INTERSECTION DETAILS
14-17	EROSION CONTROL DETAILS
18-19	MISCELLANEOUS TABLES
20-21	CROSS SECTIONS
22-38	

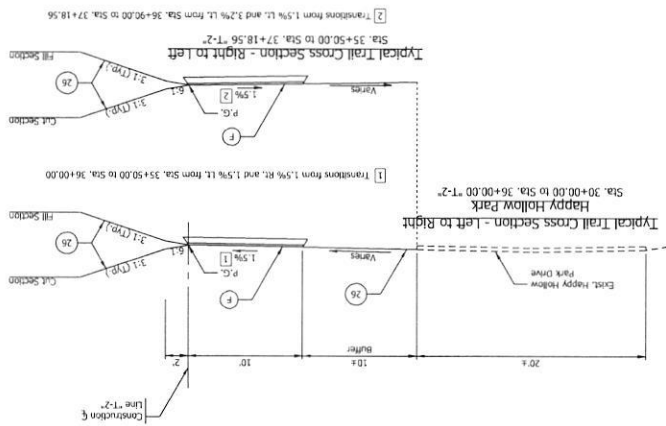
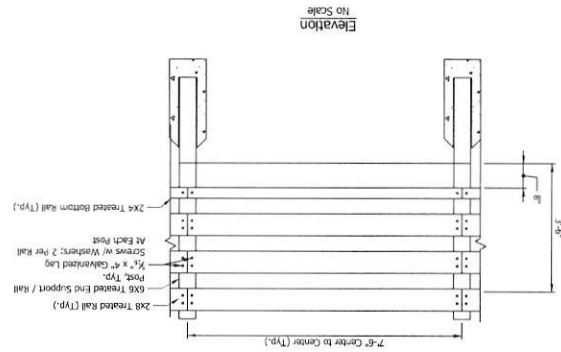
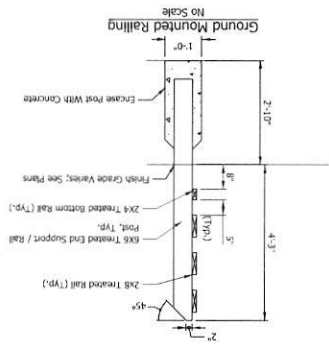
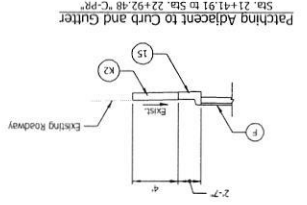
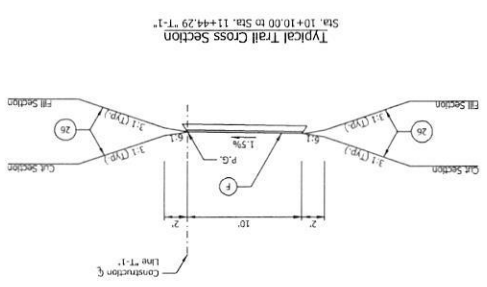
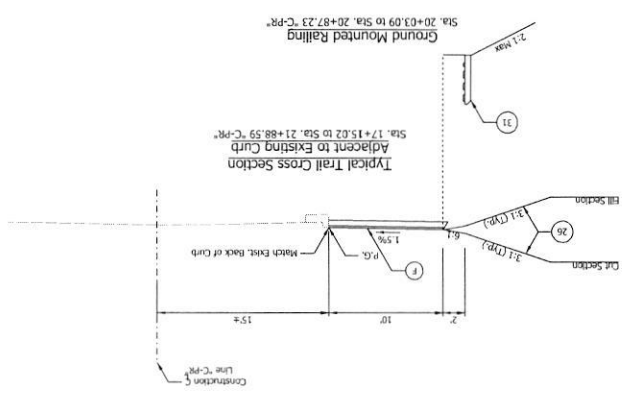
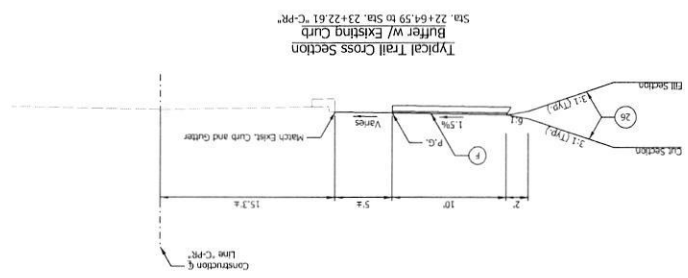
Point #	Station	Control Points		Description
		Corner	Height	
101	18+27.35 C+2A'	15.44 FT	1001377.14	MNS.DMI
104	13+47.25 S+2A'	78.69 FT	1001864.21	MNS.DMI
111	13+48.80 S+2A'	78.69 FT	1001702.96	1/2" B&S&R
115	11+24.15 T+1'	58.91 FT	1001937.06	1/2" B&S&R
116	20+18.67 S+2A'	25.93 FT	1001926.24	MNS.DMI
117	12+30.66 C+2A'	20.36 FT	1001954.67	1/2" B&S&R
118	18+43.66 S+2A'	18.81 FT	1001992.27	MNS.DMI
119	18+17.35 S+2A'	8.96 FT	1001895.04	MNS.DMI

INDIANA	INDUSTRIAL SCALE	HORIZONTAL SCALE
DEPARTMENT OF TRANSPORTATION	VERTICAL SCALE	DESIGNATION
INDEX AND GENERAL NOTES	N/A	1401288
	SUPPLY BOOK	
	CONTRACT	

RECOMMENDED FOR APPROVAL	DESIGN ENGINEER	DATE
DESIGNED: MSP	DRAWN: SPJ	CHECKER: JBK
CHECKED: JLR		

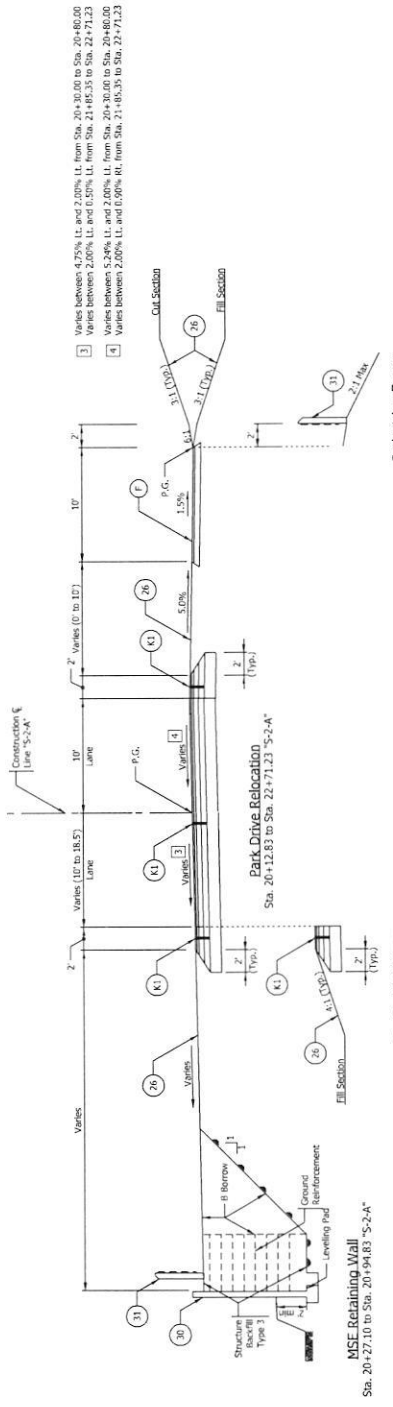

**LEGEND:**

- (F) HMA for Sidewalk
- (E) Connected Aggregate No. 53, base on 2.75" Bl/4" HMA Surface, Type B on Subgrade Treatment, Type III
- (D) Bl/4" HMA Surface, Type B on 2.75" Bl/4" HMA Intermediate, Type B on Subgrade Treatment, Type II
- (C) Bl/4" HMA Surface, Type B on 2.75" Bl/4" HMA Intermediate, Type B on Subgrade Treatment, Type II
- (B) Bl/4" HMA Surface, Type B on 2.75" Bl/4" HMA Intermediate, Type B on Subgrade Treatment, Type II
- (A) Bl/4" HMA Surface, Type B on 2.75" Bl/4" HMA Intermediate, Type B on Subgrade Treatment, Type II
- (K1) HMA Patching, Type B
- (K2) 165 Bl/4" HMA Surface, Type B on 2.75" Bl/4" HMA Intermediate, Type B on Subgrade Treatment, Type II
- (K3) 165 Bl/4" HMA Surface, Type B on 2.75" Bl/4" HMA Intermediate, Type B on Subgrade Treatment, Type II
- (26) Nursery Sod
- (30) MSE Wall
- (31) Pedestrian Fence, Wood



INDIANA  
DEPARTMENT OF TRANSPORTATION

DESIGNED BY	DESIGN ENGINEER
CHECKED BY	CAD
CONTRACT	PROJECT
SHEETS	DATE
SLURRY BOOK	NO. OF SHEETS
N/A	142128
VERTICAL SCALE	DESCRIPTION
1"=5'	REPLACE FILE
HORIZONTAL SCALE	



Typical 4:1 Slope  
Sta. 20+94.83 to Sta. 22+71.23 "S-2-A"

Curb & Gutter  
Sta. 20+12.77 to Sta. 20+35.68 "S-2-A"

Curb & Gutter  
Sta. 20+12.94 to Sta. 21+85.35 "S-2-A"

Pedestrian Fence  
Sta. 20+36.75 to Sta. 21+85.02 "S-2-A"

- 3 Varies between 4.75% L.L. and 2.00% L.L. from Sta. 20+40.00 to Sta. 20+80.00
- Varies between 2.00% L.L. and 0.50% L.L. from Sta. 21+85.35 to Sta. 22+71.23
- Varies between 5.24% L.L. and 2.00% L.L. from Sta. 20+12.83 to Sta. 22+71.23
- Varies between 2.00% L.L. and 0.00% M.L. from Sta. 21+85.35 to Sta. 22+71.23

RECOMMENDED FOR APPROVAL DESIGN ENGINEER DATE:	INDIANA DEPARTMENT OF TRANSPORTATION	HORIZONTAL SCALE VERTICAL SCALE N/A	BRIDGE FILE DESIGNATION 1401288
<b>TYPICAL CROSS SECTIONS</b>			

- (1) Pedestrian Fence, Wood
- (2) Curb and Gutter, Concrete
- (3) MSE Wall
- (4) HMA for Approaches  
165 lb/yard HMA Surface, Type B on  
2.75 lb/yard HMA Intermediate, Type B on  
Subgrade treatment, Type II
- (5) HMA for Shoulder  
165 lb/yard HMA Surface, Type B on  
2.75 lb/yard HMA Intermediate, Type B on  
Subgrade treatment, Type II
- (6) Nursery Sod
- (7) Structure Type 3
- (8) B Borrow
- (9) Ground Reinforcement
- (10) Leveling Pad
- (11) MSE Retaining Wall